



Folke Lane
Alweston
Sherborne
Dorset DT9 5HR

Folke Golf Club

SAFEGUARDING POLICY

In support of SafeGolf Accreditation

Document No: FGC/SafeguardingPolicy/001

Issue No: Issue 1

Date: February 2021

Authorised By

A handwritten signature in black ink, appearing to read 'M. Maguire', written over a dotted line.

Mark Maguire
Club Welfare Officer

A handwritten signature in black ink, appearing to read 'D. W. Hinks', written over a dotted line.

Derek Hinks
Club Captain

CONTENTS

1	Introduction	3
2	Folke Golf Centre and Golf Club Strategy for SafeGolf Accreditation	3
2.1	Background.....	3
2.2	Approach for SafeGolf	3
3	Safeguarding Policy Documentation	4
4	Safeguarding Process Monitoring	5
5	Conclusion	5

1 Introduction

SafeGolf is a partnership of UK golf bodies committed to promoting a safe and positive environment for all those participating, working and volunteering in the sport of golf.

SafeGolf consists of members from the golfing bodies across Great Britain & Ireland and has been established to help golf respond to the issue of child protection in sport. Its mission is to safeguard the welfare of children and young people, as well as adults at risk, in the sport of golf. This will be achieved through a unique partnership which has the ability to influence and act as advocate for safeguarding across the golfing landscape, developing a consistent approach towards ensuring that all people have a fun, safe and positive experience when playing golf.

This document presents the safeguarding policy for Folke Golf Club to show compliance with the SafeGolf requirements as invoked by England Golf GolfMark procedures.

2 Folke Golf Club Strategy for SafeGolf Accreditation

2.1 *Background*

Folke Golf Club is based at Folke Golf Centre which is privately owned proprietary golf centre that has a nine hole golf course with alternate tees forming a 6000 yard parkland course with a clubhouse, bar and restaurant facilities and changing rooms with showers. Golf patrons are either pay and play visitors or Centre Members that pay annual or multiyear green fees.

Folke Golf Club has about 90 members and operates semi independently of the Centre and is self funded and managed by a team of club officials that are elected annually by club members. Club members are also predominantly Centre members with a small number of pay and play members. The club members are all currently male adults of all ages with no junior or female members but club recruitment activities are ongoing.

2.2 *Approach for SafeGolf*

The club is run semi-autonomously from the centre and has no authority or responsibility for the day to day running and activities at the centre except for specific club events. The club will take full responsibility for safeguarding activities and procedures associated with club, its officials and members.

The proposed way for achieving this is by the appointment of a club Welfare Officer (CWO) that will coordinate any SafeGolf issues arising through club activities. The Folke Golf Club Welfare Officer is Mr Mark Maguire.

Whilst everyone is responsible for safeguarding, the Club Welfare Officer is the person with primary responsibility for managing and reporting concerns about

children or adults at risk and for putting into place safeguarding procedures. The Roles and responsibilities of the CWO are outlined in the EnglandGolf Welfare Officer Guidance Note - Role Description – Club Welfare Officer – Approved December 2019.

The requirement for undergoing the Disclosure and Barring Service (DBS) check will be determined in accordance with the England Golf DBS Flowchart. An initial assessment indicates that it is not expected that the Club Welfare Officer will be required to undergo a Disclosure and Barring Service (DBS) check at this time.

The CWO will undertake on-line training courses as required by EnglandGolf:

3 Safeguarding Policy Documentation

The Folke Golf Club Safeguarding Policy Documentation is based on the EnglandGolf document templates and reference documents tailored to align with the facilities and organisation at Folke. The relationship between GolfMark and the corresponding Folke Documents are shown in Figure 1 below.

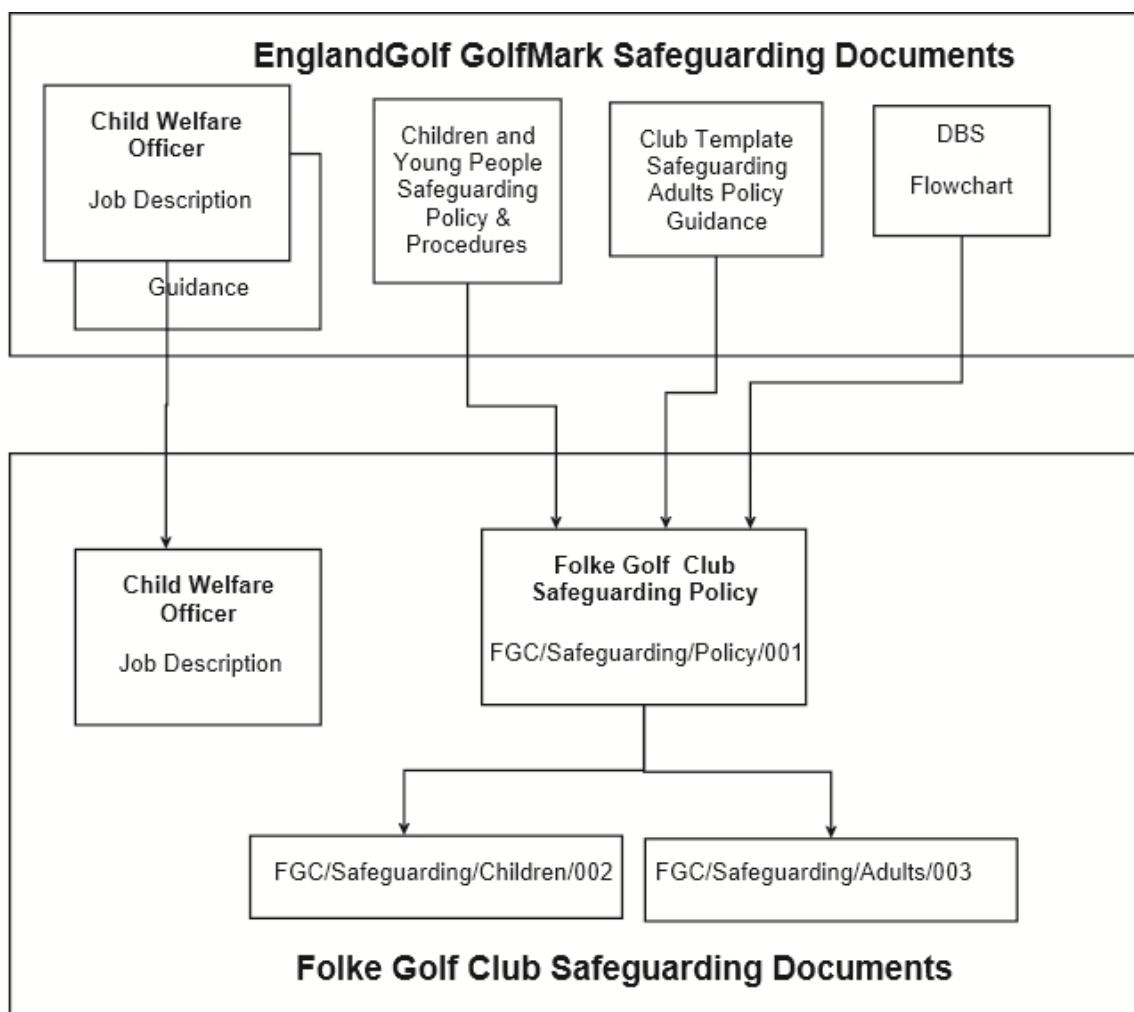


Figure 1 – GolfMark and Folke Documentation Hierarchy

The primary GolfMark requirements are defined in two documents:

- Children and Young People Safeguarding Policy and Procedures – Approved December 2019
- Safeguarding Adults Policy – Updated March 2020

The tailoring of these documents to reflect the application by Folke Golf Club is defined in the following Folke documents:

- FGC/Safeguarding/Children/002 Issue 1, February 2021
- FGC/Safeguarding/Adults/003 Issue 1, February 2021

It should be noted that currently, the Golf Centre and Golf club do not have active junior or female sections or coaching staff. Junior and female players are invariably centre pay and play visitors and the Centre requires that all juniors have to be accompanied by an adult. Many of the extensive requirements of the children and adult safeguarding templates may not be fully applicable at this time but have been included in the policy statements for completeness and will be applied when appropriate.

4 Safeguarding Process Monitoring

A six stage monitoring method is used for SafeGolf accreditation by England Golf. The six stages are as follows:

1. Adopt the England Golf Safeguarding template policy and communicate this to members, and officials.
2. Ensure appropriate safeguarding procedures are in place at the club.
3. If there are junior members, ensure appropriate procedures for the recruitment and deployment of officials and delegated members who will be working with the juniors are in place.
4. Appoint a club welfare officer with an appropriate role description and training.
5. If there are junior members ensure that appropriate Safeguarding and Child Protection training is provided to officials and delegated members that will be regularly working with the juniors.
6. The England Golf Safeguarding Adults Policy template is in place and has been approved by your club at committee level.

The SafeGolf accreditation process underway at Folke will be monitored by the EnglandGolf Club Support Officer, Mr. Tom Jessamine.

5 Conclusion

This document identifies the processes and procedures to be applied at Folke Golf Club to meet the SafeGolf safeguarding accreditation requirements. The officials,

and members are committed to promoting a safe and positive environment for those participating, working, and volunteering in the club golfing activities at Folke.