



Folke Golf Centre and Golf Club

SAFEGUARDING POLICY

In support of SafeGolf Accreditation

Document No: FGC/SafeguardingPolicy/001

Issue No: Draft A

Date: 26 March 2020

Authorised

.....
Centre Manager

.....
Club Captain

CONTENTS

1	Introduction	3
2	Folke Golf Centre and Golf Club Strategy for SafeGolf Accreditation	3
2.1	Background.....	3
2.2	Approach for SafeGolf	3
3	Safeguarding Policy Documentation	4
4	Safeguarding Process Monitoring	5
5	Conclusion	5

1 Introduction

SafeGolf is a partnership of UK golf bodies committed to promoting a safe and positive environment for all those participating, working and volunteering in the sport of golf.

SafeGolf consists of members from the golfing bodies across Great Britain & Ireland and has been established to help golf respond to the issue of child protection in sport. Its mission is to safeguard the welfare of children and young people, as well as adults at risk, in the sport of golf. This will be achieved through a unique partnership which has the ability to influence and act as advocate for safeguarding across the golfing landscape, developing a consistent approach towards ensuring that all people have a fun, safe and positive experience when playing golf.

This document presents the safeguarding policy for Folke Golf Centre and Golf Club to show compliance with the SafeGolf requirements as invoked by England Golf GolfMark procedures.

2 Folke Golf Centre and Golf Club Strategy for SafeGolf Accreditation

2.1 *Background*

Folke Golf Centre is privately owned and has a nine hole golf course with alternate tees forming a 6000 yard parkland course with a clubhouse, bar and restaurant facilities and changing rooms with showers. Golf patrons are either pay and play visitors or Centre Members that pay annual or multiyear green fees.

Folke Golf Centre is also the home of Folke Golf Club which operates semi independently of the Centre and is self funded and managed by a team of club officials that are elected annually by club members. Club members are also predominantly Centre members with a small number of pay and play members. The club members are all currently male adults of all ages with no junior or female members.

2.2 *Approach for SafeGolf*

Although the club is run semi-autonomously from the centre it is important that a joint approach to SafeGolf is implemented so that any SafeGolf issues that arise are dealt with in a coherent manner irrespective of whether they arise via the Centre or the club.

The proposed way for achieving this is by the appointment of a Centre Welfare Officer (CWO) to cover Centre activities supported by a club Welfare Liaison Official (WLO) that will coordinate any SafeGolf issues arising through club activities.

Whilst everyone is responsible for safeguarding, the Centre Welfare Officer is the person with primary responsibility for managing and reporting concerns about

children or adults at risk and for putting in to place safeguarding procedures. The club Welfare Liaison Official will support the CWO where appropriate on any issues arising via club activities. The Roles and responsibilities of the WLO and WLO are outlined in the EnglandGolf Welfare Officer Guidance Note - Role Description – Club Welfare Officer – Approved December 2019.

The requirement for undergoing the Disclosure and Barring Service (DBS) check will be determined in accordance with the England Golf DBS Flowchart. It is expected that the Centre Welfare Officer will undergo a Disclosure and Barring Service (DBS) check.

Both the CWO and the WLO will undertake the following on-line courses:

- a. Coaching Safeguarding and Protecting Children Workshop.
- b. NSPCC Child Protection in Sport Unit “Time to Listen” child safeguarding training for designated persons.

3 Safeguarding Policy Documentation

The Folke Golf Centre and Golf Club Safeguarding Policy Documentation is based on the EnglandGolf document templates and reference documents tailored to align with the facilities and organisation at Folke. The relationship between GolfMark and the corresponding Folke Documents are shown in Figure 1 below.

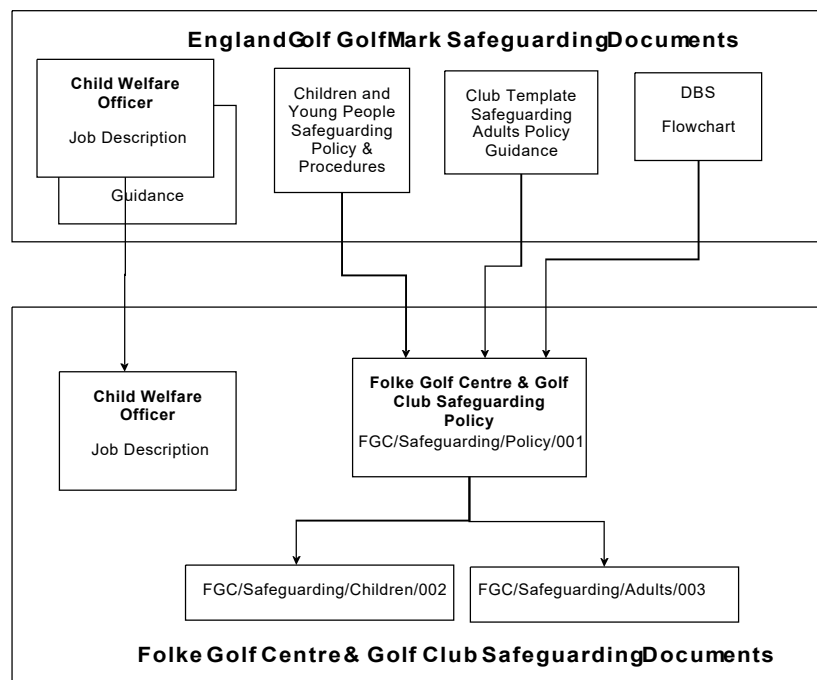


Figure 1 – GolfMark and Folke Documentation Hierarchy

The primary GolfMark requirements are defined in two documents:

- Children and Young People Safeguarding Policy and Procedures – Approved December 2019
- Safeguarding Adults Policy – Updated March 2020

The tailoring of these documents to reflect the application to Folke Golf Centre and Folke Golf Club is defined in the following Folke documents:

- FGC/Safeguarding/Children/002
- FGC/Safeguarding/Adults/003

It should be noted that currently, the Golf Centre and Golf club do not have active junior or female sections or coaching staff. Junior and female players are invariably pay and play visitors. Many of the extensive requirements of the children and adult safeguarding templates may not be fully applicable at this time but have been included in the policy statements for completeness and will be applied when appropriate.

4 Safeguarding Process Monitoring

A six stage monitoring method is used for SafeGolf accreditation by England Golf. The six stages are as follows:

1. Adopt the England Golf Safeguarding template policy and communicate this to members, visitors, staff and volunteers.
2. Ensure appropriate safeguarding procedures are in place at your club.
3. Ensure appropriate procedures for the recruitment and deployment of staff and volunteers who work with juniors are in place.
4. Appoint a club welfare officer with an appropriate role description and training. Please provide the name of your welfare officer in the 'Notes Box'
5. Appropriate Safeguarding and Child Protection training is provided to Professionals and other staff and volunteers regularly working with juniors.
6. The England Golf Safeguarding Adults Policy template is in place and has been approved by your club at management level.

The SafeGolf accreditation process underway at Folke will be monitored by the EnglandGolf Club Support Officer, Mr. Tom Jessamine.

5 Conclusion

This document identifies the processes and procedures to be applied at Folke Golf Centre and Folke Golf Club to meet the SafeGolf safeguarding accreditation requirements. The management, officials, staff and members are committed to promoting a safe and positive environment for those participating, working, and volunteering in the golfing activities at Folke.